

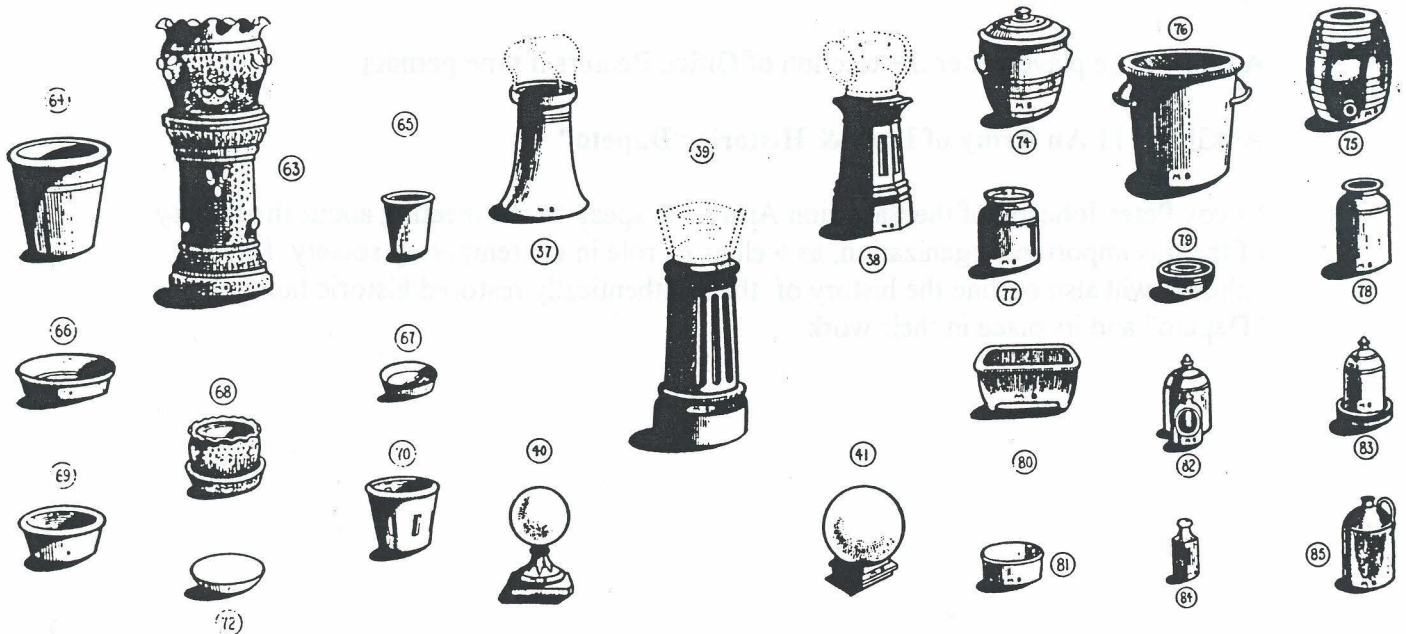
# St George Historical Society Inc. Bulletin

SPONSORED BY ROCKDALE CITY COUNCIL

JULY - AUGUST 1998 Edition



*Pages from an early Mashman Brothers' catalogue.*



PRESIDENT	Mrs. Bettye Ross	9589 0229
SECRETARY	Mrs. Valda Beehag	9546 2819
TREASURER	Mrs. Margaret Persen	9771 5461
SENIOR -VICE	Mr. Arthur Ellis	9529 4879
PRESIDENT		
VICE - PRESIDENT	Mr. Wesley Fairhall	9546 5555
RESEARCH OFFICER	Mr. Arthur Ellis	9529 4879
SOCIAL SECRETARIES	Mrs. Dora Lenane & Mrs. Joan Fairhall	9660 2714 9546 5555
PUBLICITY OFFICER	Mrs. Joan Fairhall	9546 5555
BULLETIN EDITOR	Mr. Wesley Fairhall	9546 5555
LYDHAM HALL	Mrs. B. Ross,	
LOCAL COMMITTEE	Mrs. J. Byrne & Mr. B. Sharah	
PUBLIC OFFICER	Mr. Wesley Fairhall	9546 5555
HERITAGE ADVISORY	Mr. Bernard Sharah	9567 8989
COMMITTEE		
REPRESENTATIVE		
AUDITOR	Mrs. L. Thompson	

**Meetings are held 8 PM every second Tuesday of the month (except January) in the Meeting Room 1st Floor, Rockdale Town Hall, Princes Highway, Rockdale. Members, please bring a plate. Visitors are welcome.**

## **NEXT MEETING**

### **JULY 14 Annual General Meeting.**

Yes, it is that time of the year again. **P-L-E-A-S-E** consider how you might be able to play a more active role in your Society's operation. Remember many hands make lighter work!

A film will be played after the election of Office Bearers if time permits.

### **AUGUST 11 An Army of Love & Historic "Dapeto"**

Envoy Peter Johnson of the Salvation Army will speak to the meeting about the history of this important organization, as well as its role in contemporary society. Envoy Johnson will also outline the history of their authentically restored historic home "Dapeto" and its place in their work.

## SEPTEMBER 8 The Model Garden Suburb

Mr Vincent Crowe, author of a recently published book on Haberfield, will address the meeting on some of the many interesting aspects of this prototype Garden Suburb.

### FROM THE EDITOR...

I sincerely appreciate the donation of various articles of late from the following Society members:- President Bettye Ross, Mrs Erica Jones, Mrs Joan Fairhall and Mrs Eileen Eardley. An editor can never have too many articles on hand, so please do keep forwarding them to me. Articles should be mailed to my home address as follows:-

Mr Wesley Fairhall  
7 Cheddar Street  
BLAKEHURST NSW 2221

This month features the final instalment of Mr. John Blackshaw's voyage to the colony of New South Wales.

The second article is a brief history of Mashman's St George Pottery, Kingsgrove. This pottery has quite literally added much to the fabric of society and is open for inspection upon appointment.

Kind regards,

The Editor



## LYDHAM HALL VOLUNTEERS' ROSTER

Would all members kindly consider volunteering in the capacity of Lydham Hall guides. Guide work is not onerous, requiring two hours on a Saturday or Sunday from 2.00 p.m. to 4.00 p.m. Bring a friend/s and enjoy the period charm of **your** historic house. The following table indicates the days requiring volunteers. Direct enquiries to Mrs. Bettye Ross on 9589 0229.

JULY	SATURDAY	SUNDAY	SPECIAL DAYS
	4th C. Sayer	5th D. Lenane	
	11th A. Sikkes	12th W. Fairhall	
	18th J. & T. Connell	19th <b>Christina Stead Day 12 - 4 p.m. Helpers required</b>	
	25th	26th	
AUGUST	1st	2nd	
	8th	9th	10th Monday 10.00 a.m. Jannali Congregational Church Women's Fellowship Group (15 people) B. Ross. Two other volunteers desired.
	15th	16th W. Fairhall	
	22nd	23rd	
	29th	30th	
SEPTEMBER	5th	6th	2nd Wednesday 11. 00 a.m. WEA group. (20 people for Morning Tea) B. Ross. Two other volunteers desired
	12th	13th	
	19th	20th W. Fairhall	
	26th	27th	

Some proverbs to ponder:-

"Ale sellers should not be tale tellers";

"A pennyworth of mirth is worth a pound of sorrow";

"A book that remains shut is but a block";

"A brilliant daughter makes a brittle wife "; and

"A man who is proud of his money rarely has anything of which to be proud"

The JOURNAL - A MEMORABLE VOYAGE continued

Thursday Oct 1st Still continues very cold & ? & ? splendid breeze traveling 10+ Knots an hour

Friday Oct 2nd Very cold all day bracing weather

Saturday Oct 3rd Very rough & storming

Sunday Oct 4th The coldest day since we left England, had 2 pigs killed for passengers and crew, quite a treat

Monday Oct 5th 1874 Frightfully cold had several squalls during day

Tuesday Oct 6th 1874 Looks very squally, expect some severe weather

Wednesday Oct 7th 1874 Very rough & cold shipping some very heavy sea. Gladstone Tasker & I were bailing our Cabin out from 1/2 past 8 until 12 a.m. as fast as we got it clear she kept filling again one thunderous sea went all over my bed soaking the Mattress we were nearly knee deep in water, the Cook was? washed out of the Galley the first time the sea going into the pea soup & washing that & the pork all over the ship spoiling our dinner, this took place about 1/2 past 11, the next time it spoilt the Saloon dinner, I slept in the Saloon from this date till my bed was dry

Thursday 8th Still the same weather

Friday 9th A little change for the good splendid breeze we traveled 305 - 310 - 315 miles for 3 days

Saturday 10th They say this is the last day for ?. Expect to get to Melbourne this day week

Sunday Another change hardly any breeze

Monday 12th Oct No change still very calm, no wind

Tuesday 13th Bearing about off Cape Lewis

Wednesday 14th Quite a change of affairs a head wind no chance of getting to our destination this week

Thursday 15th Very calm all day until late at night when a little wind got up in front of us Glorious day

Friday 16th Glorious Morning did not sleep aft Thursday night on account of my bed having dried

Saturday 17th Nothing of any note

Sunday 18th Still the same old routine

Monday 19th Getting close to the Coast of Australia

Tuesday 20th Sighted the Coast of Australia all the passengers appear to be going good

Wednesday Lay outside B-- Bay until 4 o'clock pilot came aboard to book us through the heads ? their whilst wind changes at last make -----bridge height ? ? evening

Thursday Went ashore Goodbye Peterbrough.

*Editor's note: The journal concluded at the above point, I wonder who & what became of Baron Louis Hilbron.*



The following article is derived from an article appearing in the Heritage Conservation News magazine of Volume 3 Number 3 1986, published by The Heritage Council of New South Wales. The source material was obtained from research undertaken by Ernest A. Ungar and discussions with Mr. Frederick Mashman.

### *MORE THAN PIPES & POTS*

Mashman's St George Pottery, Kingsgrove, was founded by Frederick Albert Mashman in 1908 and is still being run by his son, also Frederick Mashman, and his grandson, Michael Mashman. Much of the original factory is still in use, the supporting timbers having been cut from trees logged on the block. Clay was originally obtained nearby, however, it is today brought from the South Coast.

The senior Frederick Mashman, founded the enterprise with the intention of manufacturing sewer pipes but experienced difficulties with their manufacture. The plant then produced terra-cotta ware; ornamental garden ware, flower pots, sill tiles, ventilators and agricultural pipes.

A shortage of roofing tiles during World War One resulted in the local builders persuading Frederick Mashman to commence their production in conjunction with his other terra-cotta ware. Manufacture continued until the 1930s' depression, following a fall in demand caused by a slump in the building industry. Fortunately, production of the other ware continued.

A business trough was experienced during the mid - 1970s. Housing changes relegated chimney pots to a virtually redundant status. As sales virtually ceased and a stockpile of hundreds developed, the company finished their production. An unlikely rescue was had through the onset of the energy crisis as people gravitated back to open fires and in doing so demanded chimney pots.

At present, chimney pots, flower pots, sill tiles and ventilators continue to be produced. In addition, Mashman's have included quarry and paving tiles in their range. Sales take place from their factory in Kingsgrove.

A significant part of the manufacturing operation is traditional as evidenced by the pottery's original equipment and processes.

Mashman's inherited a large number of the Wunderlich moulds in 1980. These have been used to make terra-cotta roof edge capping and roof finials. Hand moulding is still undertaken when required and the pottery will still fulfill specific private orders as requested.

Mashman's Pottery could prove quite a boon to people in the process of conserving their residences - as that long lost ventilator, roof finial or chimney pot might just be had from the Mashman's premises. Importantly, the pottery represents a living example of this industry's production processes and methods surviving from early this century.

## **A Day of Contrasts**

**DATE: Wednesday 22/07/98**

**MEETING PLACE: Ormonde Parade Hurstville at 9.00 a.m.**

This bus trip organised by the St. George Historical Society will include a visit to the Dingo Breeding Farm at Bargo. We will then visit the Warrumbungle Sanctuary (home of the White Waratah) and the Camden Creek Herb Farm.

The day will conclude with a tour of the historic 1830's John Verge designed homestead "Wivenhoe" owned and operated by the Sisters of the Good Samaritan. The sisters' have kindly also agreed to open their chapel and the restored stable complex for our inspection.

**COST:** \$15.00

**CONTACT:** Joan Fairhall on telephone number 9546 5555

## **Winter Concert**

**DATE: Sunday 26/07/98**

**VENUE: St. Peter's Anglican Church St. Peter's**

A refreshing mix of classical and more modern pieces featuring Sally Treloyn on the flute and Michael Hooper on the mandolin.

The concert will be followed by a light meal in the church hall.

**COST:** Entry by donation - proceeds to the organ restoration fund.

**CONTACT:** St. Peter's Church on 9557 3795 (after hours).

## **More than a Buck**

**DATE: Wednesday 26/08/98**

**MEETING PLACE: Steps of Parliament House Macquarie Street.**

This tour organised by the St. George Historical Society will visit both chambers, the Great Hall and library of the historic Francis Greenway designed Parliament House.

After lunch, we will view an exhibition of early Australian currency on display at the Reserve Bank. Bring a friend - the more the merrier.

*DONATION TO SOCIETY WOULD BE MOST HELPFUL:*

**COST:** Nil - lunch can be brought or bought on the day.

**CONTACT:** Dora Lenane on telephone number 9660 2714 or 9181 2121



## **A Delightful Highland Escape**

**DATE:** Tuesday 15/09/98

**MEETING PLACE:** St. Jude's Anglican Church Bowral

A tour organised by the Church of England Historical Society will view the quaint sandstone church of St. Jude. A talk on the church will be given and the rest of the day can be spent at your leisure.

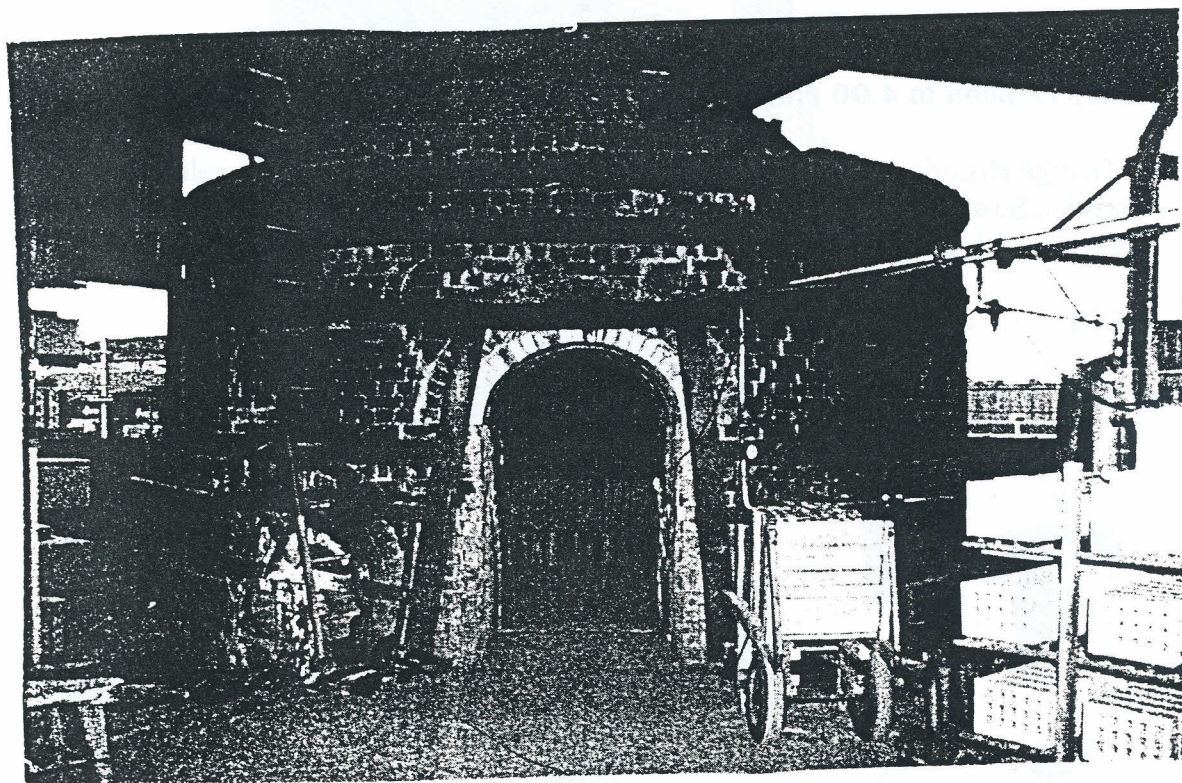
The majority of people will be catching the 9.15 a.m. train from Central Station.

Everyone welcome!

**COST:** \$5.00 donation - inclusive of morning tea and drink after luncheon.

**CONTACT:** Joan Fairhall on telephone number 9546 5555

*An original circular kiln shell in use at Mashman's St. George pottery, Kingsgrove.*



**WHAT' S ON.....**

**A Flowery Affair**

**DATE:** Saturday 18/07/98. Time 11.00 a.m. - 4.00 p.m.

**EVENT:** Australian Geranium Society Inc. Annual Show.

**VENUE:** Uniting Church Hall Turrumurra (behind the shops).

This show will mark the 40th anniversary of the Australian Geranium Society's founding. As always, a spectacular display will be staged by members of the society featuring rare geranium and pelargonium varieties. Plants for sale will be available from commercial growers present on the day. A must see for all gardening enthusiasts and admirer's of nature's beauty. Light refreshments will be available at a small cost.

**COST:** Entry \$2.00.

**CONTACT:** Joan Fairhall on telephone number 9546 5555

**Christina Stead Day**

**DATE:** Sunday 19/07/98

**TIME:** 12 noon to 4.00 p.m.

St George Historical Society members and friends are warmly invited to celebrate Christina Stead's birth date at Lydham Hall. The day will feature a video of her interview with Elizabeth Riddell and light refreshments will also be available.

**COST:** \$3-00.

**CONTACT:** Bettye Ross on telephone number 9589 0229 to advise of your attendance.